



## INVESTING IN THE FUTURE



"Inspiring a Lifelong Love of Learning"

**An invitation  
to invest  
in family, faith,  
and freedom  
to the glory of God**

**PRAY**

**2018**

KONOS ACADEMY  
at Christ's Church at Whitewater  
1577 Hwy. 85 South  
Fayetteville, GA 30215

**Contact Info:**  
P.O. Box 142099  
Fayetteville, GA 30214  
770 - 632 - 0771  
email: [info@konos.org](mailto:info@konos.org)  
[www.KONOS.org](http://www.KONOS.org)

**BUILDING AND ENDOWMENT FUND**

## Welcome to the Konos Academy Building & Endowment Fund

**Prospectus.** The contents of the prospectus are designed to

introduce you to the educational philosophy and history of

Konos Academy and provide information regarding our building

project. We are delighted you are taking the time to consider

participating in this worthy endeavor.

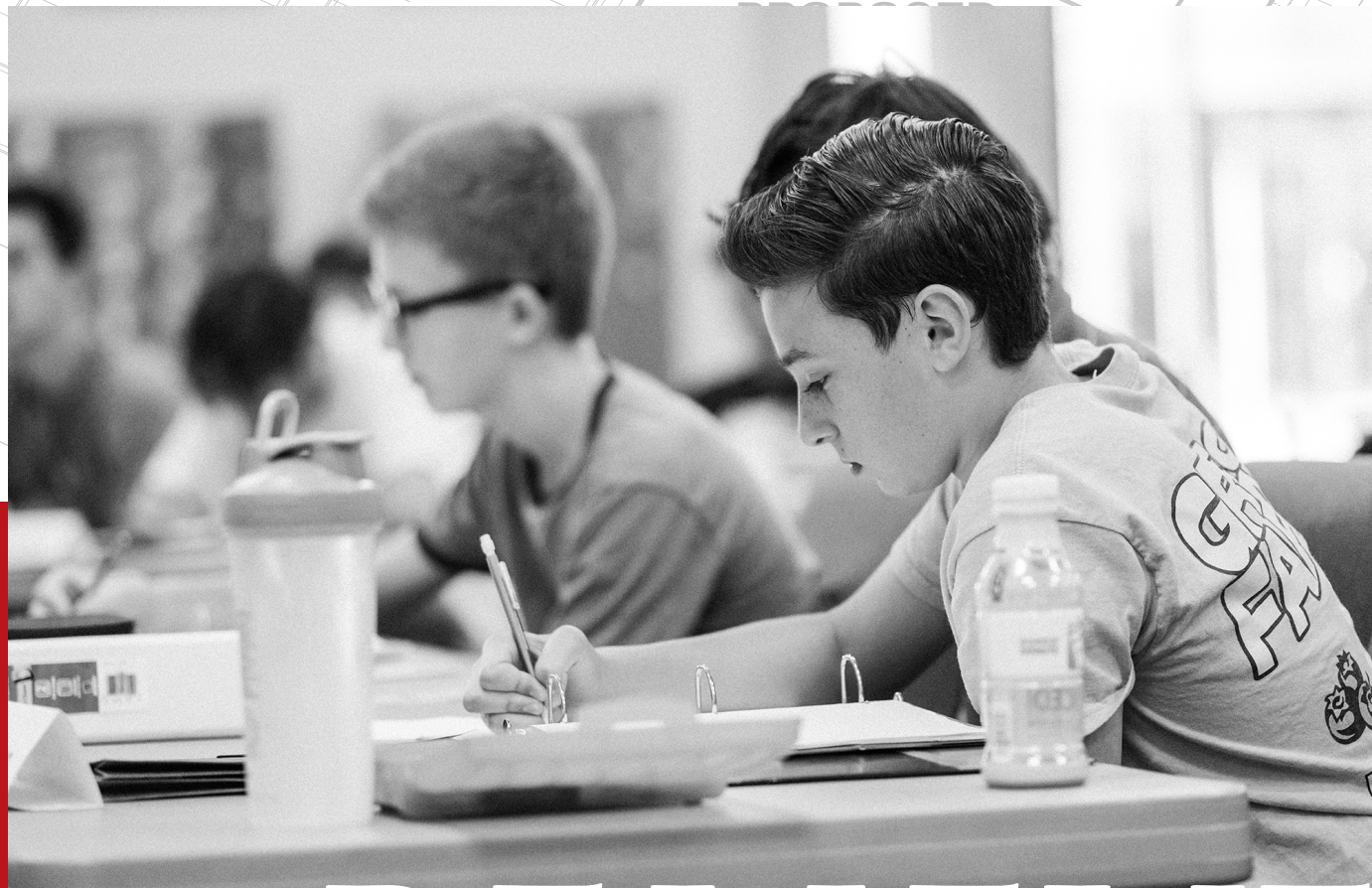
We invite you to invest in the future of our children, families,

country, faith, and freedom by participating in the Konos

Building and Endowment Fund. Please pray for God's

blessing on this project, as well as our children, families,

teachers, and administration.



# BELIEVE

# CONTENTS

Konos Vision, Mission, and Objective	4
Konos Academy Growth	5
Development Factors and Growth	6
Project Phases and Estimated Cost	7
Land Acquisition – Phase I	8
Multi-Use Building Architectural Plan – Phase II	9
Academic Building Architectural Plan – Phase III	10
Konos Meaning – A strange word with great significance	11
Konos Distinctives – A unique philosophy of education	12
The Konos Family – The communities we serve	13
Colleges and Universities attended by Konos graduates	14
The Genesis of Konos	15
The Konos Future	16
Appendix A – Konos Leadership	17

Konos is a 501c3 corporation.

All donations are tax-deductible.



**The Konos Passion**  
Inspiring a lifelong love of learning through a biblical worldview.

**The Konos Vision**  
To be the leading model of parent-based education, teaching God’s truth the Konos way.

**The Konos Mission**  
Konos Academy is an accredited hybrid learning center that provides a classically rich curriculum through integrated and experiential academics, **inspiring a lifelong love of learning, and teaching students to think and speak from a biblical worldview, in a manner that glorifies God.**

**The Konos Objective**  
Rather than providing a “Christian label” education, Konos Academy’s primary passion is God’s kingdom and glory. Given this, we strive to inspire a lifelong love of learning in our students through a biblical lens. We provide a classically rich curriculum that engages students’ minds, teaching them to think and speak from a perspective that acknowledges and embraces God as the author of all knowledge and sovereign ruler over all His creation.

Our culture and government continue to relinquish precious freedoms established at the birth of this nation. The cry “There is no God!” increasingly prevails. Konos Academy opposes this, shaping future leaders and lovers of freedom whose lives are based on the foundations of God, His authority, His Word, His Son, and His wisdom.

As our culture moves away from God, the demand for a Konos education increases. The demand is evident from the growth statistics that follow. However, we do not have the capacity and facility to accommodate strong continued growth. Konos has leased and borrowed space over the past 16 years as the school has grown from 20 students to 250 students. Now, we need to establish a stable home and foundation for the future.

Therefore, we invite you to invest in the future of our children, families, country, faith, and freedom with a generous donation to the Konos Building and Endowment Fund. We also invite you to pray for God’s blessing on this project, as well as for our children, families, teachers, and administration.

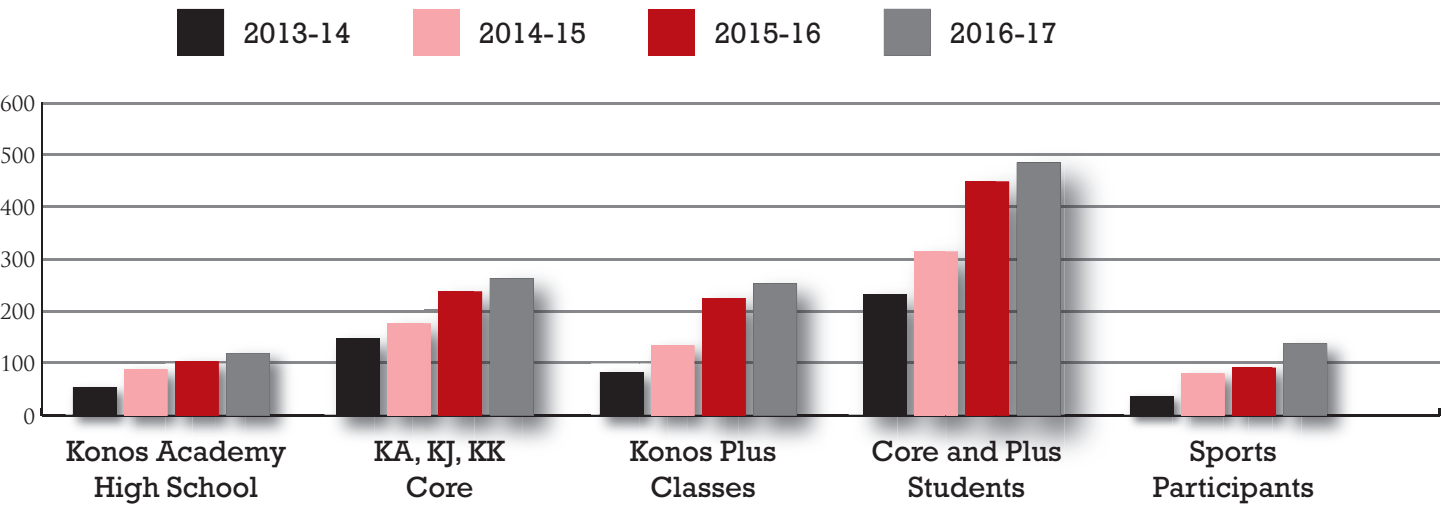
# OUR GROWTH

The chart below displays the growth at Konos Academy from 2013-14 to 2016-17.

The high school began in 2001 with approximately 20 students. In the three years following 2013-14, Konos experienced a **19% annual growth rate**.

The high school [Konos Academy or (KA)], junior high [Konos Juniors (KJ)], and elementary school [Konos Kids (KK)] core classes represent grades 4-12. These core classes enjoyed a **17% annual average growth rate over the past three years**. In 2017-18, we have expanded again to include grades 1-3. This new group is called Konos Kidlets.

The Konos Plus classes are offered on Mondays and include an a la carte menu of classes that are not offered on the core day for KA, KJ, and KK. These include foreign languages, math, science, and the arts. There were 86 students in 2013-14 and 240 students in 2016-17. This branch of Konos experienced a **43% annual growth rate**. 267 students are enrolled for 2017-18.



# PROJECTED

In 2017-18, Konos Kidlets (grades 1-3) celebrated its first year of operation with 15 students on Wednesdays. We anticipate the tripling of enrollment and the addition of two days (Tuesdays and Thursdays) over the next few years. With the addition of a new facility, we project a minimum growth of **10% per year** for total enrollment.

# DEVELOPMENT FACTORS AND GROWTH

## 2013-14

Academic Curriculum with integrated biblical worldview  
Core program: 153 students  
Konos Plus program: 86 students  
Sports program: 26 students and 2 sports (1st year offering athletics)

Total revenue \$518,000

## 2014-15

Academic Curriculum with integrated biblical worldview  
22% **increase** in core program enrollment (187 students)  
48% **increase** in Konos Plus enrollment (128 students)  
Sports program: 83 students and 4 sports  
Added third day to high school core program

Total revenue \$780,000

## 2015-16

Academic Curriculum with integrated biblical worldview  
23% **increase** in core program enrollment (230 students)  
71% **increase** in Konos Plus enrollment (219 students)  
Sports program: 95 students and 4 sports  
Added third day to Konos Kids and Konos Juniors core program

Total revenue \$870,000

## 2016-17

Academic Curriculum with integrated biblical worldview  
7% **increase** in core program enrollment (245 students)  
10% **increase** in Konos Plus enrollment (240 students)  
Sports program: 134 students and 4 sports

Total revenue \$950,000

## 2017-18

Academic Curriculum with integrated biblical worldview  
Added **Konos Kidlets** – Grades 1-3 (not previously offered at Konos)  
\$300 **Annual Sustaining Fee added**  
Total revenue unavailable at time of printing.  
At time of printing, 255 students in core program and 265 in Konos Plus

# PROJECT PHASES AND ESTIMATED COST

The building project includes three phases. The first phase has been completed and the second phase has begun. The third phase is expected to begin in 2022, unless the Lord provides more quickly.

### Phase I: Land Acquisition (completed)

Phase I required the purchase of land as the permanent future location of Konos Academy. Christ’s Church at Whitewater (CCW – current landlord) was willing to sell Konos 5.5 acres of their land to facilitate the project. In September 2015, Konos and CCW entered into a purchase agreement for the land. After clearing various hurdles with the Planning & Zoning Commission, including a change in the county zoning ordinance, Konos received approval to develop the land and closed on the property December 5, 2016.

### Phase II: Multi-Use Facility

The second phase of the project includes the construction of a multi-use facility with lobby that will be the connecting point to the Phase III academic building. The facility will be approximately 24,500 square feet, including a gymnasium for athletics, graduations, plays, banquets, dances, and other gatherings (see next page for floor plan). A large stage will spare us from looking for outside venues for our plays, dances, and graduations (as we do currently), and the gymnasium will provide us with our own home for basketball and volleyball.

The multi-use facility will also house nine classrooms, a kitchen, and two large storage rooms that will provide room for future growth. The estimated cost for this second phase is \$5 million dollars, or \$196 sq/ft.

The second phase will also include raising at least \$1 million dollars for an endowment fund to diffuse operating expenses.

### Phase III: Academic Building

The third phase of the project includes the construction of a two-story academic building with foyer connecting to the multi-use facility (see pages 8-10). This building will be approximately 20,000 square feet and will contain a connecting foyer, lecture hall, two additional classrooms for the high school on first floor, and eight classrooms on the second floor.

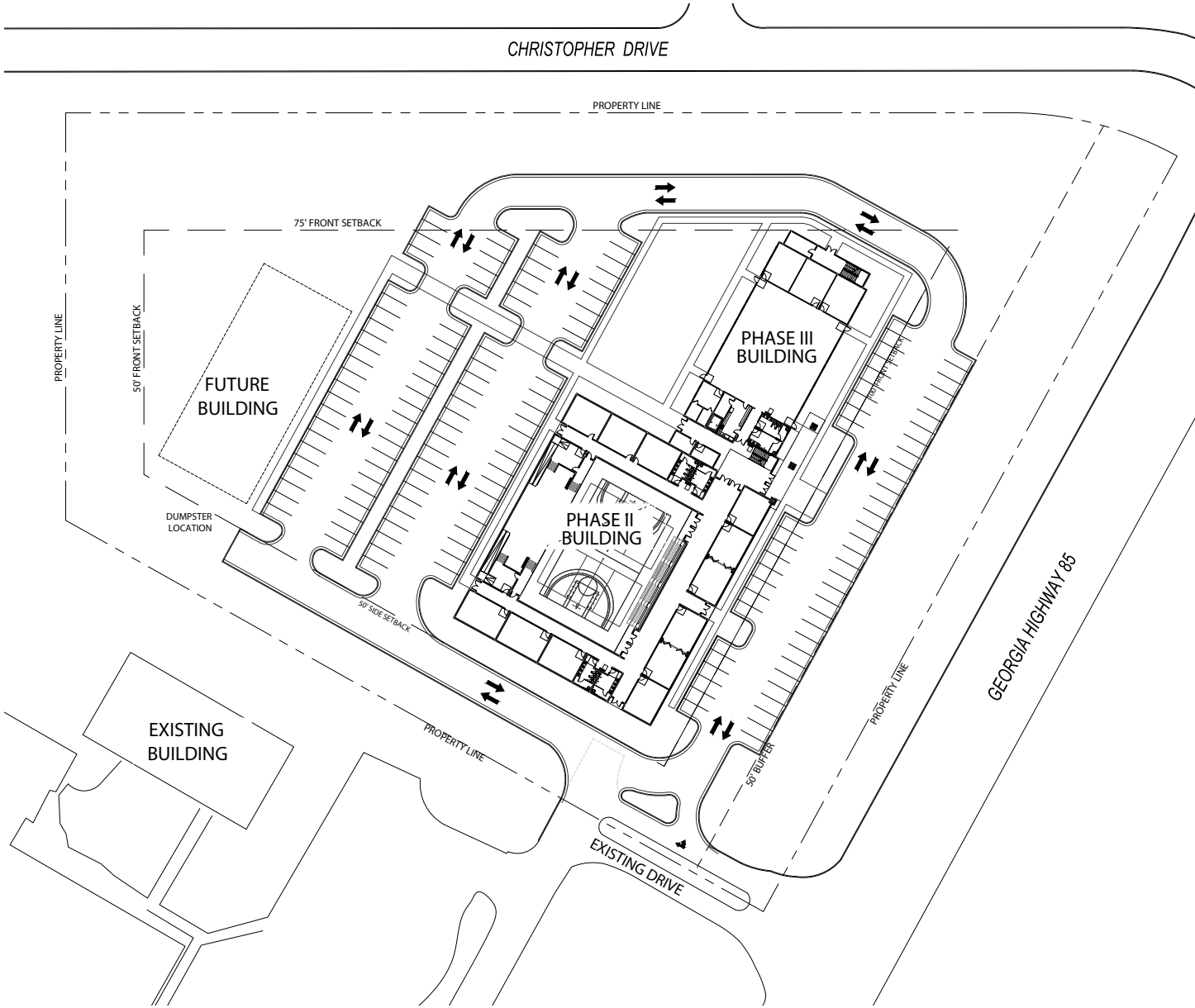
The estimated cost of this phase is approximately \$3.9 million dollars.

### Funds Raised

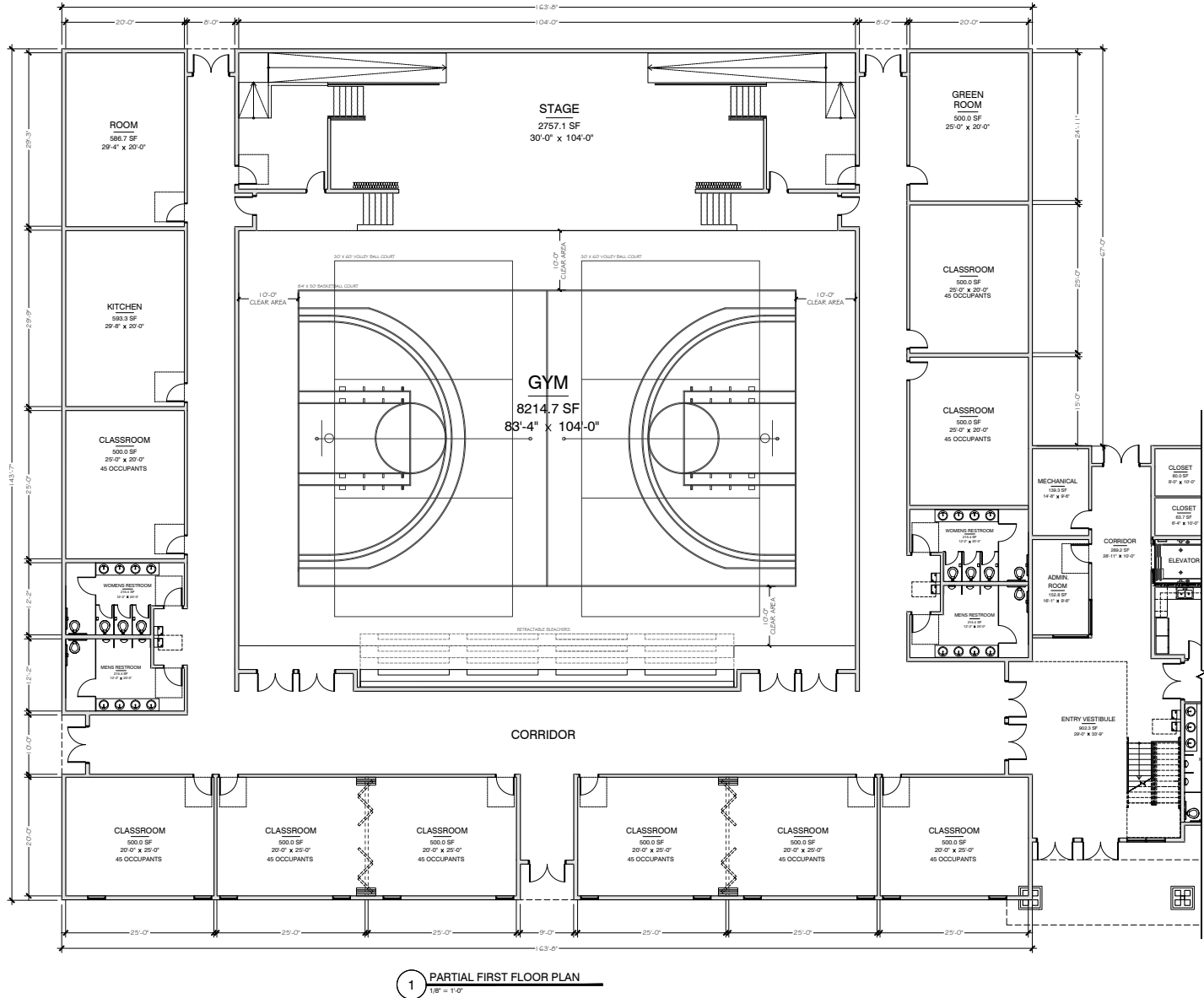
At the time of printing, over \$330,000 has been raised, the land has been purchased, and \$245,000 is in the bank.

**Note:** The estimated cost of the building plan does not reflect the anticipated and pledged donations and services of business partners in this project. Walt Sellers and Sellers Mechanical Services, Inc. will serve as the general contractor.

# PHASE I: LAND ACQUISITION

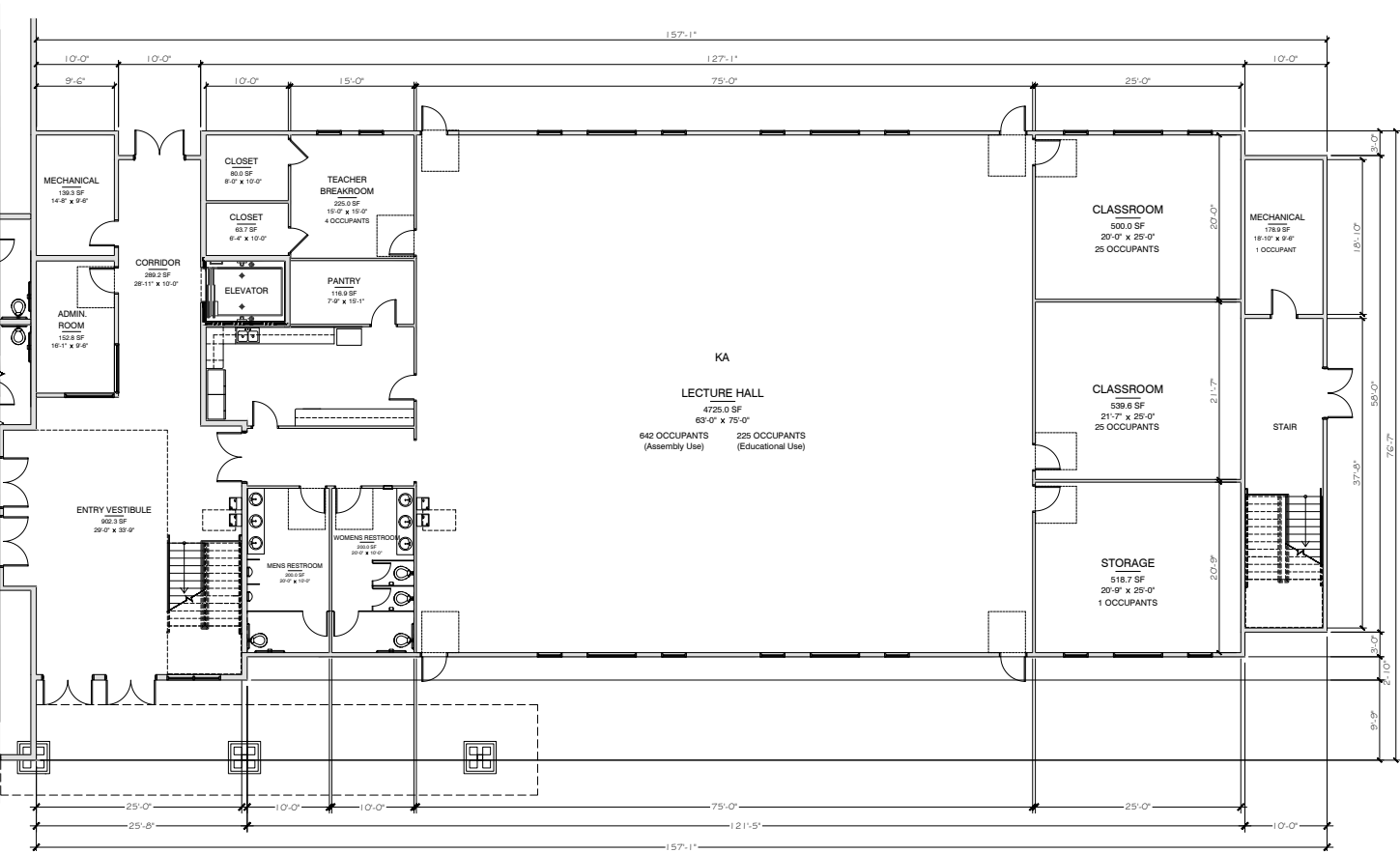


# PHASE II: MULTI-USE FACILITY



# PHASE III: ACADEMIC BUILDING

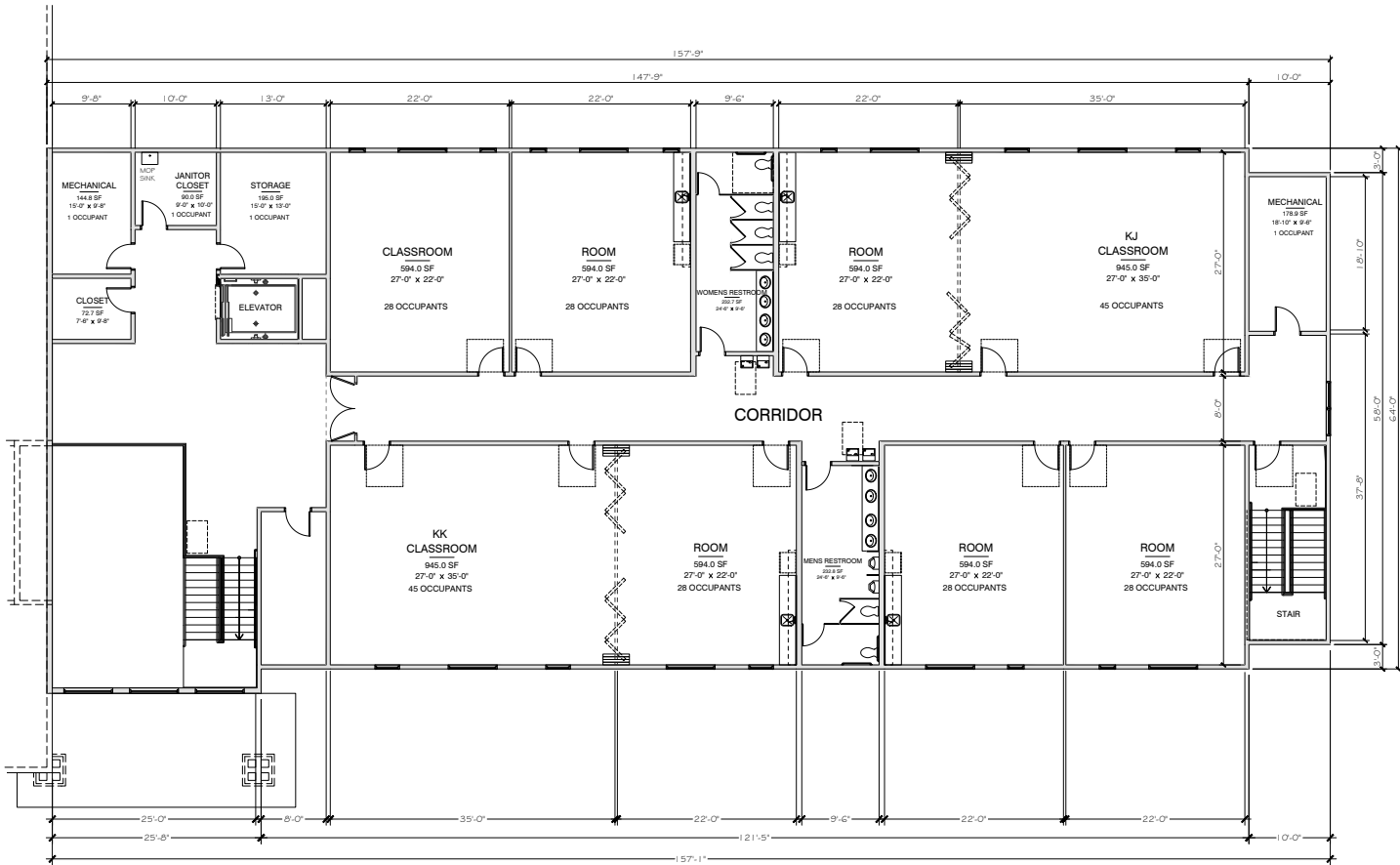
## HIGH SCHOOL LECTURE HALL



FIRST FLOOR

# PHASE III: ACADEMIC BUILDING

## KONOS KIDS AND KONOS JUNIORS



SECOND FLOOR

# WHAT DOES KONOS MEAN?

The word Konos is the Greek word for “cone” and represents a biblical worldview. The inverted cone symbolizes God at the top of all life and knowledge, not just “religious” life. His influence is seen both in creation (natural and physical sciences, geography, mathematical principles) and in His design of humans (philosophy, history, art, music, literature, technology, and law). Therefore, to be well educated means to have a thorough knowledge of theology, the sciences, and the humanities.



# WHAT IS DISTINCTIVE ABOUT KONOS?

Konos Academy is an accredited hybrid learning center that serves homeschool families. Students attend class one day each week (two days if more classes are selected from the Konos Plus Monday a la carte menu). Students participate in a rigorous curriculum, receive accountability and structure, and enjoy access to athletic teams, plays, and other social events. Konos’ flexibility and freedom allow families to pursue diverse interests outside the classroom.

## Classic curriculum

Konos provides a classical education. We use the term “classical” to refer to that which is true, good, and beautiful from God’s perspective. God’s standards of truth, goodness, and beauty are those by which we evaluate all human works. Konos hopes to inspire students to strive to meet these standards. We choose to study time-proven works, read excellent literature, listen to classically appreciated music, observe fine art, and learn from admirable people. High standards of skills and character are held up for students to emulate. Students like learning at Konos because of its hands-on, experiential, challenging, fun-filled activities, which supplement their classical education.

## Coordinating with parents

What role do parents play at Konos Academy? We believe parents are the primary educators (i.e., trainers, mentors, nurturers, counselors, shepherds, disciplers) of their own children. Within this broad goal, they select the best avenue of education for each of their children. Parents are informed on a weekly basis of what is required by the student and are engaged in the assignments with their children.

## Coordinated context

Konos teaches the “big picture.” Konos students understand that God exists and has communicated to this world, which establishes a framework for all subjects. Rather than piecemeal courses, students immerse themselves in a historical period, which integrates all their courses, while receiving accredited grades for each course. Subjects are organized around thematic units so that history, art, music, literature, and

English composition are all related to the same basic theme, showing students the big picture of how these disciplines interrelate.

## Captivating experiences

No matter how broad the context, no matter how well integrated the curriculum, no matter how true the material, it is not “digested” by students if it does not captivate their interests. God created people to do (active), not just to receive (passive). One Konos goal is to create a love of learning so that the students really learn, not just cover, what is presented. Konos activities absorb students’ interests, immersing them in topics.

## Challenging self-learning

Konos Academy exists for more than entertaining and informing students. We want students to inquire on their own, to find answers to questions, to come up with creative solutions, to seek to learn more. Konos challenges students by giving them the responsibility of problem solving. By quietly encouraging the students to ask further questions, the students build confidence in their ability to learn.

## Creative expression

As every teacher knows, something is not truly known until it is taught. Konos goes beyond just “covering” material. Unless students are able to tell it or demonstrate it to someone else, they do not truly know it. If they can communicate it using their own words, artistic expression, drama, or musical composition, then it is evident that they know it.

## Character emphasis

We want students to be both smart and good. Intelligence matters little without moral character. We agree with Theodore Roosevelt: “To educate a man in mind and not in morals is to educate a menace to society.” Christian character and ethics are emphasized at Konos Academy. The Konos staff models Christian character and integrates this throughout the academic program. We desire for each student to have a loving, respectful relationship with God and with others.



## THE KONOS FAMILY

Konos Academy is located in Fayetteville, but serves the communities of 12 counties and over 50 churches of several denominations in the South Atlanta region. Among the counties served are: Fayette, Coweta, Henry, Clayton, Douglas, Pike, Fulton, Butts, Heard, Carroll, Meriwether, and Harris.



## COLLEGES AND UNIVERSITIES OF KONOS GRADUATES

Our diverse student body participates in a broad range of vocations such as: artist, actor, physician assistant, occupational therapist, physicist, professional musicians, military personnel, veterinarian, registered nurse, physical therapist, mechanical engineer, business owner, missionary, state department personnel, teacher, fireman, air traffic controller, emergency medical technician, photographer, costumer, computer programmer, sports broadcaster, film editor, policeman, and many more.

**Konos Academy graduates have attended the following colleges and universities:**

Georgia Tech  
Hillsdale College  
Covenant College  
University of Georgia  
Auburn University  
Samford University  
Furman University  
Clemson University  
Augusta University  
(Medical College of Georgia)  
Liberty University  
University of Tennessee  
Sewanee – University of the South  
Berry College  
Lee University  
Bellhaven University  
...as well as a many other schools in Georgia and beyond.



# THE GENESIS OF KONOS

After meeting at L'Abri and marrying in 1971, Charles and Carole Thaxton incorporated Konos, Inc. as a teaching, training, counseling center in Cambridge, Massachusetts. The Thaxtons resolved to teach their own children according to the Konos model of incorporating academic subjects within a character development framework and called their home-school Konos Academy. Carole Thaxton and Jessica Hulcy co-authored the popular Konos Curriculum unit studies. Charles' first book, *The Mystery of Life's Origin* (Thaxton, Bradley, Olsen) was translated into Romanian in 1986, which led to his grand entrance into the university lecture halls of Romania after their revolution. Translation of *The Mystery of Life's Origin* and later *The Soul of Science* (co-authored with Nancy Pearcey) into several Eastern European languages led to extensive travel throughout Eastern Europe.

The Thaxton family resided in Prague for six years for more intensive ministry within the most atheistic country in Europe — the Czech Republic. Carole's forte of education and counseling prepared her not only for home-schooling their own sons, but also for founding the Konos Academy of Prague, an English-speaking Christian worldview school, and for counseling English-speaking families living abroad on parenting and education issues. While in Prague, Charles was diagnosed with radical cancer and suffered the loss of a leg and later a lung. As a result, the Thaxtons returned to the United States and moved to Fayetteville, GA, where they began Konos Academy in 2001. What began as a small one-day program at Covenant Presbyterian Church in Fayetteville with approximately twenty students has continued to blossom. This year the enrollment increased to approximately 255 students, pressing the leadership to seek a new home to accommodate ongoing growth in the future. The leadership team may be found in Appendix A.



# THE KONOS FUTURE

We believe this is a watershed moment in the life of Konos Academy that will give the academy exposure and witness in the community that it has not enjoyed previously, while also providing opportunity for greater influence and impact on present and future generations of children for the glory of God.

Won't you stand with us and help us build a better future? We have already raised over \$325,000 and purchased 5.5 acres to build the future home of Konos Academy, but more will be needed in order to begin construction, supply the classrooms, and establish a first year reserve and endowment fund that will help cover ongoing operating expenses. *Cost estimates for this endeavor are on page 7.*

We appreciate your generous support of Konos Academy and wise investment in the future of our families in Atlanta's southern crescent, our culture,

and our country's future. May the Lord bless you for being faithful stewards and furthering the work of His Kingdom.

Please contact the Head of School, John Lee at [john@konos.org](mailto:john@konos.org) or Jennifer Hawk at 678-471-4296 to discuss your gift. Or, you may mail your gift directly to Konos Academy at:

**Konos Academy**  
**P.O. Box 142099**  
**Fayetteville, GA 30214**

Please write "Building Fund" in the memo section or so stipulate in your cover letter. All funds donated to this project will only be used for expenses associated with the project. Donation receipts will state the same.

**Konos is a 501c3 corporation.**  
**All donations are tax deductible.**

# Appendix A: Konos Leadership



From left to right:

**John A. Lee** (Director and Head of School, literature, Bible, worldview teacher) Graduated with a B.A. in Economics from Brown University and Masters degree in Pastoral Divinity from the Log College at Heritage Church. John, with his wife Joanne, co-founded Grace Christian Academy, a classical Christian school in NY, and served as its principal, Bible and literature teacher until moving to Georgia in 2001. He is the homeschooling dad of five children, all of whom have attended or still attend Konos Academy.

**Joanne E. Lee** (English teacher, drama director) B.S. in Business Marketing from Long Island University and M.B.A. from St. John’s University, worked as an underwriting and human resources manager before she and her husband John co-founded Grace Christian Academy in NY. The Lees home school their five children, who are attending or who have graduated from Konos. Mrs. Lee coached KONOS Communicators debate and speech (interpretive, platform, and limited prep) for eight years and has co-directed Konos drama productions since 2006.

**Dr. Charles B. Thaxton** (history, religion, worldview teacher, co-founder of Konos Academy) Ph.D. in chemistry from Iowa State University, post-doctoral studies in history of science at Harvard University and molecular biology at Brandeis University, and home-school dad for 16 years, co-authored *The Mystery of Life’s Origin* and *The Soul of Science* (both translated into several languages) and has lectured worldwide. He currently lectures weekly at Konos Academy and speaks at conferences and seminars.

**Carole Thaxton** (English and Career Search teacher, Director of Konos Kidlets, co-founder of Konos Academy) B.A. biology, M.S. counseling from Syracuse University, is 16-year home-schooling mom, teacher, counselor, co-author of the KONOS CURRICULUM and author of writing curriculum. She founded the Konos Academy of Prague, an international Christian worldview secondary school. She currently directs Konos Kidlets, teaches at the academy, and counsels parents.